



TRUTH. JUSTICE.
WORLD TRADE CENTER 1, 2, AND 7

PRESIDENTIAL COMMISSION ON 9/11

CPT Raul Angulo
Roland Angle, PE
Dr. Leroy Hulsey

Richard Gage, AIA
David Chandler
Tony Robbins

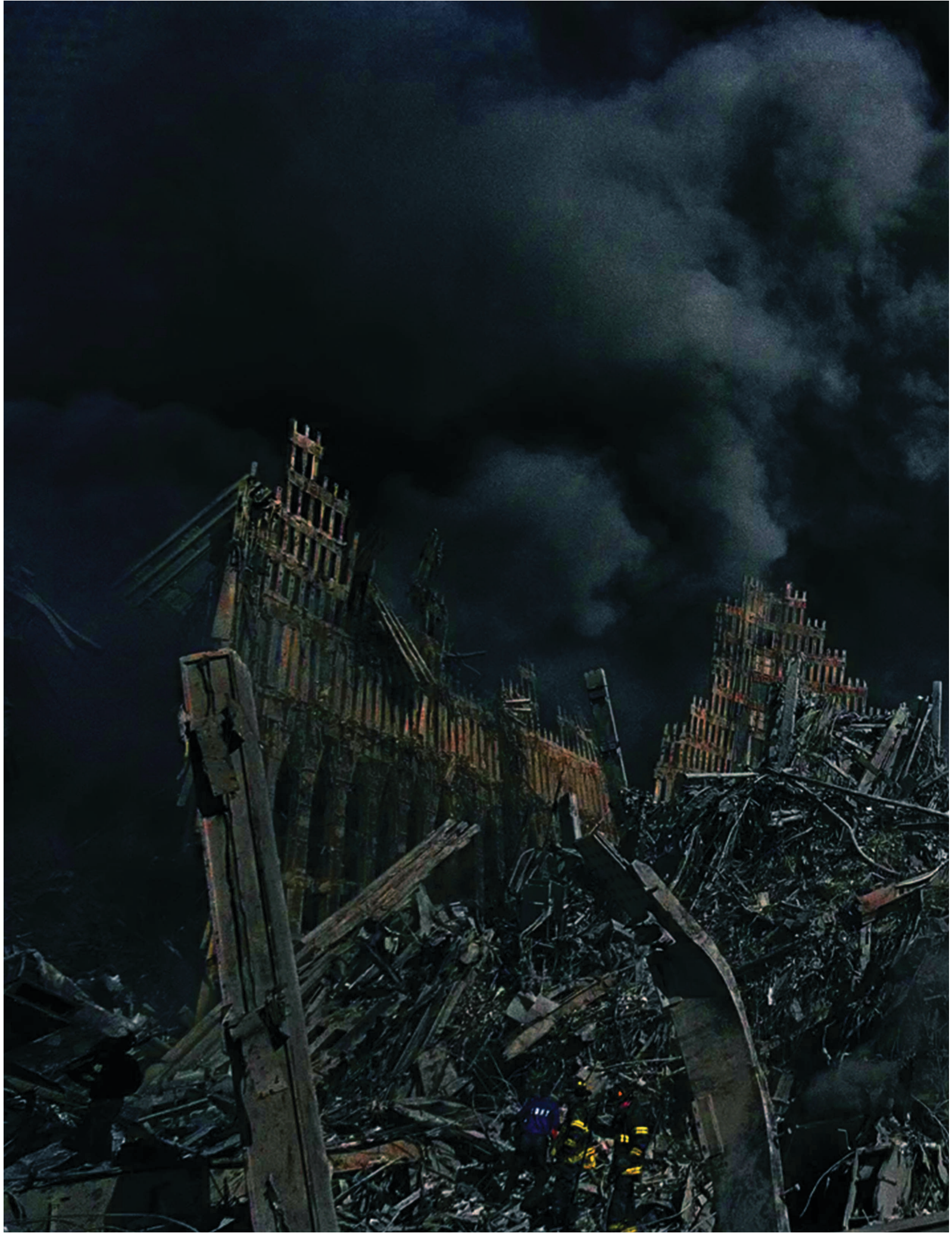
Chris Gioia
Erik Lawyer
Paul Kayley



**CALL FOR A NEW INDEPENDENT
PRESIDENTIAL INVESTIGATION INTO
THE 9/11 WORLD TRADE CENTER
DESTRUCTION**



REMEMBERING
SEPTEMBER 11





CALL FOR A NEW, INDEPENDENT PRESIDENTIAL INVESTIGATION INTO THE 9/11 WORLD TRADE CENTER DESTRUCTION

Dear President Trump and team,

Those who say September 11 should never be forgotten, yet callously relegate it to history, are disconnected from the plight of the families of civilians and first responders who lost loved ones at the World Trade Center in New York City.

A mountain of evidence has surfaced over the past 23 years that calls into question the entire government narrative. The fact that this evidence has been effectively hidden by federal agencies and the mainstream media in a complicity of silence and censorship is even more unsettling than the attacks themselves.

Mr. President, we are grateful for your commitment to truth on the major events that have been a cancer on the soul of America for so long, especially the official 9/11 narrative. Thank you for taking a strong and principled stand.

As a collective of concerned citizens comprised of firefighters, architects, engineers, lawyers, citizen investigators, and our representative organizations, we have spent more than two decades in relentless pursuit of the truth concerning what caused the destruction of the World Trade Center Twin Towers and Building 7 on September 11, 2001.

We are honored to have been invited by former Congressman Curt Weldon to collaborate on this proposal for a presidential task force that would investigate the full events of 9/11. We propose that this task force be led by firefighters, scientists, and engineers, and that it include the professionals already mentioned and others as needed. We strongly agree with Congressman Weldon's recommendation that it not include any politicians or government bureaucrats.

The attached document details the key falsehoods and omissions of critical evidence in the government's official reports on the collapses of WTC towers 1, 2, and 7 by the National Institute of Standards and Technology (NIST). This includes NIST's refusal to follow the National Standards for Fire and Explosion Investigations. The body of evidence we introduce here leads to an entirely different conclusion from the official one as to what happened at the World Trade Center on 9/11.

Secrecy undermines public trust and perpetuates uncertainty. To move forward as a nation, there must be a complete and transparent reinvestigation of 9/11, free from political and institutional



TRUTH. JUSTICE.
WORLD TRADE CENTER 1, 2, AND 7

interference and constraints. This is not merely a matter of convenience but a fundamental requirement to rebuild the very trust that is essential for a functioning, transparent, and free society.

There is no statute of limitations on mass murder and treason. What we need now is the collective courage to question the narrative; to consider more reasonable, scientific, and evidence-based explanations; and to do right by those who have perished as a result of 9/11. These include the 343 firefighters and the thousands of others they couldn't save that day. Victims also include those who have been killed in the wars that resulted from 9/11 and those who have died of illnesses caused by breathing the toxic dust at Ground Zero.

Thank you for your commitment to making America a better place for all its citizens. We believe that because of the respect that the fire service commands in this country, a firefighter-led presidential task force on 9/11 will support your commitment to truth, transparency, and accountability.



WORLD TRADE CENTER 7

The official narrative:

Claiming to have discovered a new phenomenon – “fire-induced progressive collapse due to thermal expansion” – NIST attributes the sudden, symmetrical, seven-second collapse of this fire-resistive, steel-framed, 47-story high-rise to office fires that were started by falling debris from WTC 1. WTC 7 was not hit by a plane, yet it collapsed at 5:20 p.m. on September 11, 2001, some seven hours after the Twin Towers had come down.

Evidence NIST ignored that contradicts the official narrative:

Freefall acceleration: One of the key observations about WTC 7 is that it descended for the first 2.5 seconds at the acceleration of gravity, also known as “freefall.” Freefall can be detected by graphing the velocity vs. time. If the body is in freefall, the graph will be a straight line with a slope of 9.8 m/s^2 (or 32.15 ft/s^2 .) In other words, its downward speed increases by 9.8 m/s (or 32.15 ft/s) each second it falls. If the falling material encounters any resistance whatsoever, it will fall at a slower rate. On 9/11 all three visible corners of WTC 7, and several other points along the roofline, over a span of 100 meters (328 feet), were measured to have transitioned instantly from full support to freefall simultaneously within 0.2 seconds (which was the resolution of the measurement).

Sudden collapse: Sudden transition to freefall rules out a progressive collapse by fire or any other known natural mechanism other than explosive demolition. Freefall continued for about 2.5 seconds, equivalent to the removal of all support over

eight floors low in the building. This could not have been a pancaking collapse because pancaking of floors would produce a series of jolts that would slow the rate of descent. The only way for the upper floors to accelerate uniformly downward through the building is for *all* of the underlying support to be suddenly removed.

Implications: Demolition implies foreknowledge and coordination with all other aspects of the operation.

Denial of physical, audio, video, and testimonial evidence: NIST’s primary excuse for not testing for explosives was the claim that there were no recordings of explosions or witnesses who reported hearing explosions. Even if this were true, an unprecedented full symmetrical building collapse is more than enough reason to test for explosives. But NIST lied – there are numerous recordings and witnesses.

Key witnesses of explosions in WTC 7:

Barry Jennings, Deputy Director of the Emergency Services Department for the NYC Housing Authority, and Michael Hess, NYC Corporate Counsel, were both trapped on the 8th floor of WTC 7 that morning after a large explosion shook the building. They were positive that the explosion had occurred far beneath them. They reported that the explosion occurred at approximately 9:30 a.m. and that it was followed by thick smoke and a lot of heat. These events occurred after the planes hit but before Tower 1 and Tower 2 collapsed. Tower 1 collapsed at 10:28 a.m.

Both men had to be rescued by the FDNY. While awaiting rescue, which occurred after the two towers collapsed, they

reported additional explosions from inside the building. According to NIST, the falling debris from Tower 1 is blamed for igniting the fires in WTC 7. After Jennings and Hess made it outside, an NYPD officer warned them to run away from the building because there were radio reports of additional explosions. NIST disregarded these witness reports even though there are video interviews confirming their existence.

Foreknowledge: Despite only a few fires on a small number of floors, FDNY chief officers claimed that it was unsafe for firefighters to initiate interior attacks on the fires and told them not to fight the fires in WTC 7, while on-site security personnel predicted the collapse hours beforehand, in some cases with startling accuracy. Of note is also that BBC Television reported the collapse of WTC 7 *twenty minutes before it happened*, with the building still clearly and visibly standing in the background.

Important notes: No Type 1 Fire Resistive structure (defined by the *International Building Code*), whether in the United States or anywhere else in the world, has ever completely collapsed due to fire, let alone suddenly and symmetrically into its own footprint. WTC 7, to this day, is the only one ever to do so. Despite this exceptional feat, the 585-page *9/11 Commission Report* makes no mention of the collapse of WTC 7.



TWIN TOWERS (WORLD TRADE CENTER BUILDINGS 1 & 2)

The official narrative:

The official government explanation by NIST attributes the destruction of the Twin Towers to structural damage from the plane impacts and subsequent office fires. NIST hypothesizes that the aircraft impacts removed the fireproofing from the floor trusses in the impact zones, enabling the ensuing fires to weaken the floors, causing them to sag and pull in the perimeter columns and initiate the collapse process.

Evidence NIST ignored that contradicts the official narrative:

Explosive onset: Sudden and explosive onset of the destruction of both towers without any "jolt" or hesitation upon impact with the cold, hard steel below.

Symmetry: Despite damage at different heights from the plane impacts and subsequent fires, both towers collapsed nearly identically and straight down, symmetrically, at near free-fall acceleration.

Lateral ejections: The destruction of the towers was extremely explosive – with massive steel-column sections weighing several tons laterally ejected at speeds of up to 80 mph. These columns trailed thick white smoke clouds of aluminum oxide ash, many landing 600 feet from the building. This was obviously not due to the downward-only effect of a gravity-driven collapse. Most of the steel (a third of the building's weight) was therefore not available to "crush" the building below.

Pulverized concrete: Nearly all the 90,000 tons of solid concrete in each tower was pulverized in mid-air into a fine powder

that blanketed Lower Manhattan, completely refuting the official explanation of a gravity-driven "pancake" type of collapse. Most of the concrete (another third of the buildings' weight) was also therefore not available to crush the building below.

Visible squibs: High-velocity lateral pin-point ejections of smoke and building materials, called "squibs" in the controlled demolition industry, were recorded on video at intervals as far down as 60 stories below the plane impact zones in each tower and the collapsing building above – yet another signature of explosive devices.

Pyroclastic flows: Massive clouds of super-heated smoke and pulverized building materials resembling volcanic eruptions burst upwards and outwards.

Seismic signals before plane impacts: Sub-surface seismic signals were officially recorded for each tower before the plane impacts from underground detonations, corroborated by multiple earwitnesses and eyewitnesses to massive explosions in the basement levels, before the collapse of each tower.

Molten metal: Eyewitnesses, including firefighters and engineers, reported pools of molten metal beneath the ground level of the Twin Towers for days, weeks, and even months after the attacks. These were described vividly by several as "flowing like lava." Molten iron – a signature of thermite – is seen pouring out of the South Tower minutes prior to its collapse and in numerous other videos and photos.

Photographic evidence: Official NASA thermal images confirm long-lasting, extreme-heat hotspots at the site. Even

months after the collapse of the towers, thermal imaging recorded surface temperatures in the rubble exceeding 1,400°F, yet no fires remained on the surface. The extreme heat could only have originated from much hotter materials deeper down in the pile – despite the first responders pouring "a lake of water" on it. This is another signature of ignited thermitic materials.

Extreme-temperature steel corrosion: FEMA documented WTC structural steel with "intergranular melting" and "hot sulfur corrosion attack," which requires extreme temperatures of 2,800°F – well over a thousand degrees hotter than jet-fuel or office fires generate.

Iron-rich microspheres: The U.S. Geological Survey (USGS) and others identified, in their dust sample analysis, billions of previously molten iron microspheres throughout the WTC dust – up to 6% of the samples. This is the signature byproduct of thermitic incendiary reactions – which would also require temperatures in excess of 2,800°F. Jet fuel burns at 600°F in open-air.

Nano-thermite: Dual-layered red-gray chips of nano-thermite were discovered in all the WTC dust samples, amounting to about four tons. They were found by an international team of scientists led by chemistry professor Niels Harrit. The red layer in the still-unignited chips has been documented in the peer-reviewed *Bentham Open Chemical Physics Journal* as "active thermitic material." This is definitive evidence of the source of the extreme-heat phenomenon above and the cause of the destruction of the towers' structural elements.



OFFICIAL STUDIES AND REPORTS

1 – FEMA (Federal Emergency Management Agency), May 2002

FEMA was responsible for the first major report on the WTC destruction, which was inconclusive as to the cause of the collapse of WTC 7. It suggested, however, that there were not enough combustibles (office Class A fuels) to sufficiently weaken the structural members. It also documented, in its metallurgical examination of the steel in Appendix C, extreme temperature effects on the steel, including steel members in the debris pile that were partially evaporated (requiring 4,000°F [2,204°C]). Further examination revealed the presence of sulfur, indicating that the incendiary "thermate" had been used.

2 – NIST (National Institute of Standards and Technology), September 2005 and November 2008

Failings of the NIST reports

Lack of testing: In violation of National Fire Protection Association (NFPA) 921 *Guide for Fire and Explosion Investigations*, which requires that debris should be tested for incendiaries, NIST never examined the residue for evidence that the buildings were destroyed by pre-planted devices. Even after a team of international scientists (Harrit et al) completed their own investigation of the WTC dust and informed the agency that they had found the chemical signature of a powerful incendiary, NIST continued to refuse to perform such tests on its WTC dust samples.

Dismissal of eyewitness accounts: NIST has also ignored the accounts of 156 documented testimonies (mostly from oral histories from first responders on the scene) plus many other witnesses who reported clearly hearing and seeing numerous explosions going off, even before the towers came down.

Destruction of evidence: In violation of all standard protocols for preserving crime scene evidence and rapidly investigating catastrophic structural failures, the structural steel from the three high-rises was removed from the site by the City of New York, beginning just two weeks after 9/11, and recycled before a thorough forensic analysis could be conducted. **NIST itself admits that just 0.25 to 0.5 percent of the steel from the Twin Towers was preserved, and even less from WTC 7.**

Secrecy: NIST refused under FOIA requests to release much of the data they used in creating their computer models of WTC 7, claiming that making it public would "jeopardize public safety."

Model vs. reality: NIST's simulated computer model of WTC 7 omitted several key elements of the building's steel frame that would have precluded the failure mode that they proposed, which looked nothing like the actual collapse of the building as documented in videos of the event. And while NIST claims that raging fires caused the collapse initiation, photos and videos of the 12th floor in the north-east corner of WTC 7 reveal instead that the fires had burned out in that area almost an hour before the building came down. Yet NIST's fire simulation model falsely shows raging fires almost up to the time of the collapse.

Failed initiation of collapse theory: According to NIST, sagging floors of WTCs 1 and 2 pulled in the outer (perimeter) columns, which caused the buildings to collapse, but a) they could not have applied the required force to do so, and b) videos of the collapse clearly reveal that the interior columns of the buildings failed first – not the perimeter columns.

Omission of phenomena contradicting the official narrative: The complete pulverization of concrete, the 600-foot lateral ejections of steel, the ubiquitous presence of molten metal, the billions of previously molten iron microspheres in the WTC dust, the seismic signals prior to plane-impacts and prior to collapse, and the extremely high temperatures incapable of being produced in jet fuel fires remain completely unaccounted for in the official narrative.

Collapse not addressed: NIST's report on the Twin Towers excluded their actual collapse. It states, "The focus of the Investigation was on the sequence of events from the instant of aircraft impact to the *initiation* of collapse for each tower," and that the report "includes little analysis of the structural behavior of the tower after the conditions for collapse initiation were reached and collapse became inevitable."
– NIST NCSTAR 1, WTC Investigation



OFFICIAL STUDIES AND REPORTS

University of Alaska Fairbanks (UAF) WTC 7 Report (September 2019)

UAF structural study: UAF conducted a four-year study funded by thousands of AEG11Truth supporters that attempted to verify NIST's conclusions. The UAF study was led and authored by Professor J. Leroy Hulsey Ph.D. investigator, forensic engineer, structural engineer, and department chair. Using similar computer modeling technology, his team not only could not replicate NIST's conclusions, but it also entirely invalidated them.

WTC 7's distinct geometry with its trapezoidal shape, the center plane of which ran through the framing of the elevator shafts, adding stiffness to the core. This means that during a wind or seismic event, the structure would bend around this axis, but during a pure gravitational collapse, the building would fail asymmetrically toward the short base of the trapezoid on the south side, tipping over toward WTC 1. These facts rule out NIST's claim of progressive failure. The building came down as a total system into a single footprint.

UAF report refutes NIST: UAF's definitive conclusion is that "Fire Did Not Cause the Collapse of WTC 7." The only way it could have collapsed the way it did would have been from *the simultaneous removal of all 82 columns on eight consecutive floors* in the lower part of the building. And that, in turn, could have only happened with strategically pre-placed explosives.

Firefighter concerns

Observed fires: As a Type 1 fire-resistive structure, WTC 7 was designed and constructed to tolerate and resist fires in excess of what it was subjected to. The main columns had three-hours fire protection ratings and only had to endure normal office fuel load fires, burning in any given location for only 30-40 minutes. Yet, NIST claims that these ordinary office fires brought down the first Type 1 high-rise in history.

Anomalous temperatures: Evidence of molten steel and concrete. Open air office fires, fueled by normal office furnishings, aviation turbine fuel (ATF), or a combination of both, cannot generate temperatures high enough to melt steel or concrete. Open air burning temperatures of ATF range from 500-599°F (260-315°C) and the melting point of steel ranges from 2,500-2,800°F (1,371-1,540°C). Molten steel is indicative of the involvement of exotic accelerants, which NIST failed to investigate.

NFPA investigation standards: In contravention of everything firefighters are taught about crime scene protection and preservation, much of the evidence of this incident was destroyed. Numerous federal laws were broken in the removal of this evidence and forensic data, which could have better identified the cause of this incident. NIST ignored critical firefighter and witness testimonies, video and audio recordings of explosions, and testimonies of firefighters seeing, hearing, and experiencing explosions.

NIST admits that it used no physical evidence for the investigation of WTC 7 and failed to comply with the requirements of NFPA 921, the national *Guide for Fire and Explosion Investigations*. Contraventions included:

- the "**spoliation of evidence**"
- failure of "**preservation of the fire scene**"
- disregard of the implications of "**high-order damage**"
- failure to properly test for "**high explosives**"
- failure to "**analyze fuel source**"
- failure to test for "**exotic accelerants**"
- and a disregard of the implications of "**extremism**"



OFFICIAL STUDIES AND REPORTS

Legal initiatives

From the Lawyers' Committee for 9/11 Inquiry:

The legal foundation for the Lawyers' Committee's principal WTC initiative is the right of citizens to report evidence of federal crimes about 9/11 to a grand jury, and the duty of the Department of Justice is to relay citizen reports of federal crimes to a grand jury. A grand jury may consider all evidence of any type.

A Grand Jury Petition was submitted on April 10, 2018, and on July 30, 2018, to the Office of the U.S. Attorney, Geoffrey Berman, in the Manhattan Southern District of New York by the Lawyers' Committee for 9/11 Inquiry, Inc. The Petition, which was for the U.S. Attorney to report federal crimes relating to WTCs 1, 2, and 7 to a special criminal grand jury pursuant to 18 USC§3332 (a), can be viewed at LCfor911.org.

The federal crimes addressed in the Petition, which remains pending and could be acted upon by the new U.S. attorney, are:

- Acts of terrorism, transcending national boundaries
- Providing material support to terrorists
- The killing of a federal government agent or employee
- Bombings of places of public use and government facilities
- Aiding and abetting, accessories, and conspirators of federal crimes

The Petition's evidence that pre-planted explosives and/or incendiary devices were detonated and ignited at the World Trade Center on 9/11 is critically important and disturbing. Forensic and physical evidence confirms the presence in the WTC dust of explosive and/or incendiary thermitic material and byproducts of the use of such high-tech explosives and/or incendiaries.

The Petition contains expert analysis and opinions corroborating the forensic evidence of the demolition of the World Trade Center Twin Towers and WTC Building 7 using pre-planted explosives and/or incendiaries.

From Architects & Engineers for 9/11 Truth:

AE911Truth has made every effort over the past 19 years to bring its evidence to the attention of NIST. This includes the filing of a Request for Correction, detailing its differences with NIST over its WTC 7 report. NIST did not address the RFC in any substantial way and claimed that it had stood by its report.

AE911Truth then sued NIST in federal court, a process that ultimately led to the court declaring that **"government agencies are under no obligation to issue scientifically accurate reports."**

AE911Truth also brought its evidence to the attention of several members of Congress, including draft legislation called the Bobby McIlvaine Act, named after one of the victims who was killed by an explosion in the WTC 1 lobby before the building started to fall. To date, no member of Congress has stepped forward to sponsor this legislation.



CONCLUSION

This document refutes the official narrative of the catastrophic events at the World Trade Center complex on 9/11. All evidence points to the explosive controlled demolition of WTC Building 7, the North Tower (WTC 1), and the South Tower (WTC 2).

After 23 years, nothing short of a truly independent and transparent investigation will make it possible for the victims' family members – and Americans as a whole – to obtain answers, justice, and closure.

Authors

Captain Raul Angulo, Seattle Fire Department, Ret'd
Protecting All Protectors Alliance (protectingall.org)
Author of: *Engine Company Fireground Operations*, 4th Edition
(NFPA and Jones and Bartlett Learning)

Prof. J. Leroy Hulsey, S.E. Ph.D.
University of Alaska Fairbanks (UAF)

Roland Angle, P.C.E.
Architects & Engineers for 9/11 Truth (AE911Truth.org)

Kamal S. Obeid, S.E., P.E.
Architects & Engineers for 9/11 Truth (AE911Truth.org)

Richard Gage, AIA, Architect
Founder and former CEO of AE911Truth
Now independent at RichardGage911.org

David Chandler, B.S. Physics, M.A. Education, M.S. Mathematics
International Center for 9/11 Justice
(g11speakout.org/David-Chandler)

Chief Christopher Gioia, Ret'd
Franklin Square and Munson Fire District,
New York

Paul Kayley, Firefighter, North Yorkshire
Fire Service (UK), Ret'd
Film-maker & Producer of the WTC 7 documentary *Calling Out Bravo-7*
Firefighters for 9/11 Truth (ff911truth.org)

Erik Lawyer, Firefighter, Seattle Fire Department, Ret'd
Firefighters for 9/11 Truth (ff911truth.org)
Protecting All Protectors Alliance
(protectingall.org)

Curt Weldon, Firefighter and Senior Advisor

Mick Harrison, Attorney, and Barbara Honegger, Board Chair,
Lawyers' Committee for 9/11 Inquiry
(lcforg11.org)

Editors

Sandra Jelmi-Laratonda
Gene Laratonda
Craig McKee

Graphic Design

Jeff Long
Director of Marketing of AE911Truth

Other team members

Captain Tony Robbins, North Kansas City
Fire Dept., Ret'd
Commercial Airline Pilot
Licensed Fire Investigator

Richard Rotanz, Ph.D.
1st Deputy Commissioner, Office of Emergency Management (OEM) of Nassau County, NY
(During the September 11, 2001 attacks)
Captain, FDNY (Ret'd) Special division assignments:
Safety Command, Special Operations Command

Glenn P. Corbett, Associate Professor, John J. College (N.Y.)
Author of *Brannigan's Building Construction for the Fire Service*, 6th Edition
(NFPA and Jones and Bartlett Learning)

Captain Richard Patterson, FDNY, Ret'd

Andy Steele
Director of Operations of AE911Truth

Firefighter Michael Sunter, North Yorkshire
Fire and Rescue Service (UK)

Tony Szamboti, Mechanical Engineer, P.E.

Scott Grainger, F.P.E.

Jonathan H. Cole P.E. and Independent Researcher

David Cole, Independent Researcher





REMEMBERING
SEPTEMBER 11

**TRUTH.
JUSTICE.
NEVER
FORGET
9/11.**

WORLD TRADE CENTER 1, 2, AND 7
